



PeopleTools

PeopleSoft Search and
PeopleSoft Fluid

Deepankar Narayanan
Vice President, PeopleTools Development
Nov 09, 2017
Alliance Down Under, Brisbane

Safe Harbor Statement

The following is intended to outline our general product direction. It is intended for information purposes only, and may not be incorporated into any contract. It is not a commitment to deliver any material, code, or functionality, and should not be relied upon in making purchasing decisions. The development, release, and timing of any features or functionality described for Oracle's products remains at the sole discretion of Oracle.

Program Agenda

1 PeopleSoft Search

- Recent Highlights
- Roadmap

2 PeopleSoft Fluid

- Recent Highlights
- Roadmap

Program Agenda

1

PeopleSoft Search

- Recent Highlights

- Roadmap

2

PeopleSoft Fluid

- Recent Highlights

- Roadmap

PeopleSoft Search

Powered by Elasticsearch



- Easy Elasticsearch Deployment using DPK
- Scalable Elasticsearch System Architecture
- High Availability and Disaster Recovery Capability
- Live-Cutover to support instant switch over from SES
- Increased Performance in PeopleSoft Indexing New
- Increased Fault Tolerance in PeopleSoft Indexing New
- Upgrade Elasticsearch Upcoming

Elasticsearch is supported from PeopleTools 8.55.11 onwards
Elasticsearch is the only Search Engine from PeopleTools 8.56
SES End of Life – April 2018

Elasticsearch - Demo

[PeopleSoft PeopleTools Elasticsearch Home Page](#) [Elasticsearch on PeopleTools 8.56](#) [Elasticsearch on PeopleTools 8.55](#) [Troubleshooting and Known Issues](#)

Search This Document [Print](#)

**PeopleSoft PeopleTools
Elasticsearch Home Page**

Welcome

- About PeopleSoft Search Framework and Elasticsearch
- Elasticsearch Support Requirements
- Learn More About PeopleSoft and Elasticsearch
- Elasticsearch videos

PeopleTools Elasticsearch Home Page

Beginning with PeopleTools 8.55.11, customers can now use Elasticsearch which can be configured with PeopleSoft Search Framework.

About PeopleSoft Search Framework and Elasticsearch

Beginning with PeopleTools 8.55.11, PeopleSoft Search Framework adds support for a new search engine, Elasticsearch 2.3.2.

With the integration of Elasticsearch, PeopleSoft Search Framework builds on the existing search functionality features, and adds new features to enhance the end user experience. While the processes of creating queries, creating search definitions and categories, deploying search definitions and categories, and viewing search results, which you are familiar with, are not changed in the PeopleSoft implementation of Elasticsearch, Search Framework has enhanced the process of crawling, processing attachments, and indexing data.

PeopleTools 8.55.19 and 8.56.04 releases feature the Full DirectTransfer technology to transfer search data directly to the Elasticsearch search engine. Using the DirectTransfer mode, both search documents with attachments and without attachments are transferred to Elasticsearch server directly bypassing the Integration Gateway. These releases also provide enhanced memory management during the indexing process, enhanced exception handling for DirectTransfer, and improved performance during indexing and search time.

Also, please note the following:

- DirectTransfer is already in use from PeopleSoft 8.55.17 and 8.56 GA for documents with attachments. From 8.55.19 and 8.56.04, even documents without attachments will be sent through DirectTransfer making it Full DirectTransfer.
- The default configuration for Full DirectTransfer takes care of most of the customer scenarios for indexing speed and performance. Customers may perform a few additional configurations based on their requirements, for example, changing the number of Direct Transfer Handles, which is explained in the PeopleBooks.
- For customers using SSL, please refer to the PeopleBooks for additional configurations needed on the Process Scheduler server for SSL.

Note: To install Elasticsearch on PeopleTools 8.55.19 and 8.56.04, the minimum supported DPK version is DPK04 (DPK version 4).

This homepage provides all of the information you need to implement Elasticsearch within PeopleSoft Search Framework. Here you will find:

- Elasticsearch Installation documentation
- Instructions to move your existing Oracle Secure Enterprise Search (SES) to Elasticsearch
- Implementation documentation for PeopleSoft Search Framework, including Elasticsearch
- Links to PeopleSoft Application updates and fixes required for implementing Elasticsearch
- Troubleshooting and support documentation to assist with the installation and implementation

For additional information about the move to Elasticsearch, see: [Tech Update - Oracle Finds a New Search Engine for PeopleSoft](#).

SES and Verity Notice

Oracle recommends upgrading to the latest PeopleTools release. See the [Lifetime Support Summary for PeopleSoft Releases \(Doc ID: 1348956.1\)](#).

SES

SES is supported in PeopleTools 8.54 and 8.55 only until April 30, 2018.

When upgrading to PeopleTools 8.56, consider the recommendations listed below.

Currently on PeopleTools 8.53 or earlier PeopleTools release:

[Back To Top](#)

Program Agenda

1 PeopleSoft Search

- Recent Highlights
- Roadmap

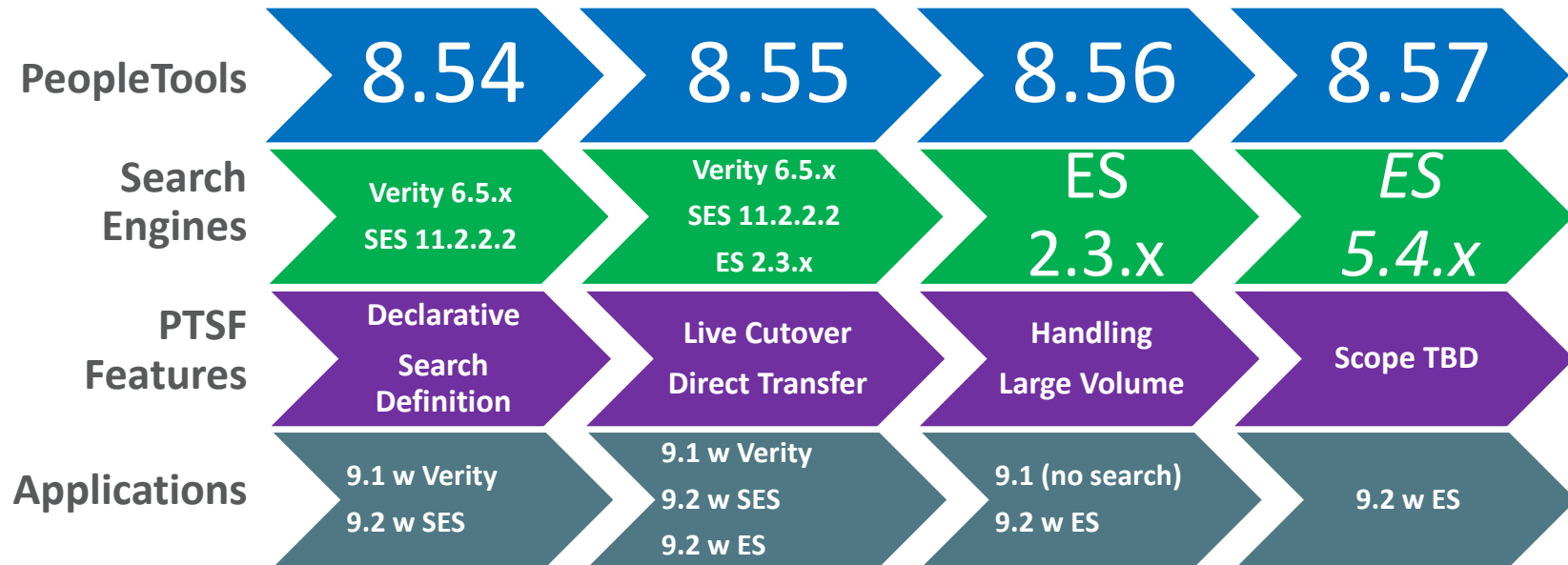
2 PeopleSoft Fluid

- Recent Highlights
- Roadmap

Roadmap



Note: If you are planning on going live in 2017, we recommend you move to PeopleTools 8.55.19. There are many fixes in that patch.



SES End of Life: **Apr 30, 2018** for all PeopleTools releases

Latest Enhancements



- Attachment processing (Elasticsearch Interact)
- Large sized documents and large volume
- Working around ES temporary failures
- Indexing issues for document types (or in general parsing errors)
- Search performance
- Accented characters
- genfeed issues (hang, crash, out of mem etc...)
- Special characters
- Facet related issues

Some Potential Enhancements



For End Users

- Autocomplete (as users type, possible results are displayed)
- Classifying attributes (results may appear in different categories, enabling users to choose the correct item)
- Adding free text dynamic filters/facets
- Social search and ranking of results (users rank value of results)
- Visualization of search results (previews, frequently visited items)
- Tagging results (users can enter tags or navigate to related results from tags)

Elasticsearch 5.x is on the way

For Administrators

- Near Real-Time log monitoring/analysis
- Combining Metrics and logs – A holistic way of analyzing logs

Multiple Facet Values during Search

Select Human Resources, Lab Facility, Finance and Administration in Department
Results from all the three values are aggregated in Search Results

[My Homepage](#)

Search Results

New Search

Department

☒ Human Resources (316)

☒ Lab Facility (26)

☒ Finance and Administration (6)

☐ None (3)

☐ Administration (1)

☐ Corporate (1)

☐ Hotel Services EMEA (1)

☐ Information Systems (1)

☐ Quality Assurance (1)

My Association

Team Member (346)

Primary Recruiter (2)

Recruiter (2)

Hiring Manager (1)

View Search Results

348 results for keyword: "Team"

Human Resources (x)

Lab Facility (x)

Finance and Administration (x)

Clear All

50 rows

30003

Manager-Compensation/Benefits,Corporation Headquarters,New York,NY

10279

Sr Payroll Clerk(Interview),Delaware Operations,Wilmington,DE

600035

Laboratory Technologist I - Reference 60002 (Fed Monthly),Corporation Headquarters,New York,NY

600031

Laboratory Technologist I - Reference 60002 (Fed Monthly),Corporation Headquarters,New York,NY

600027

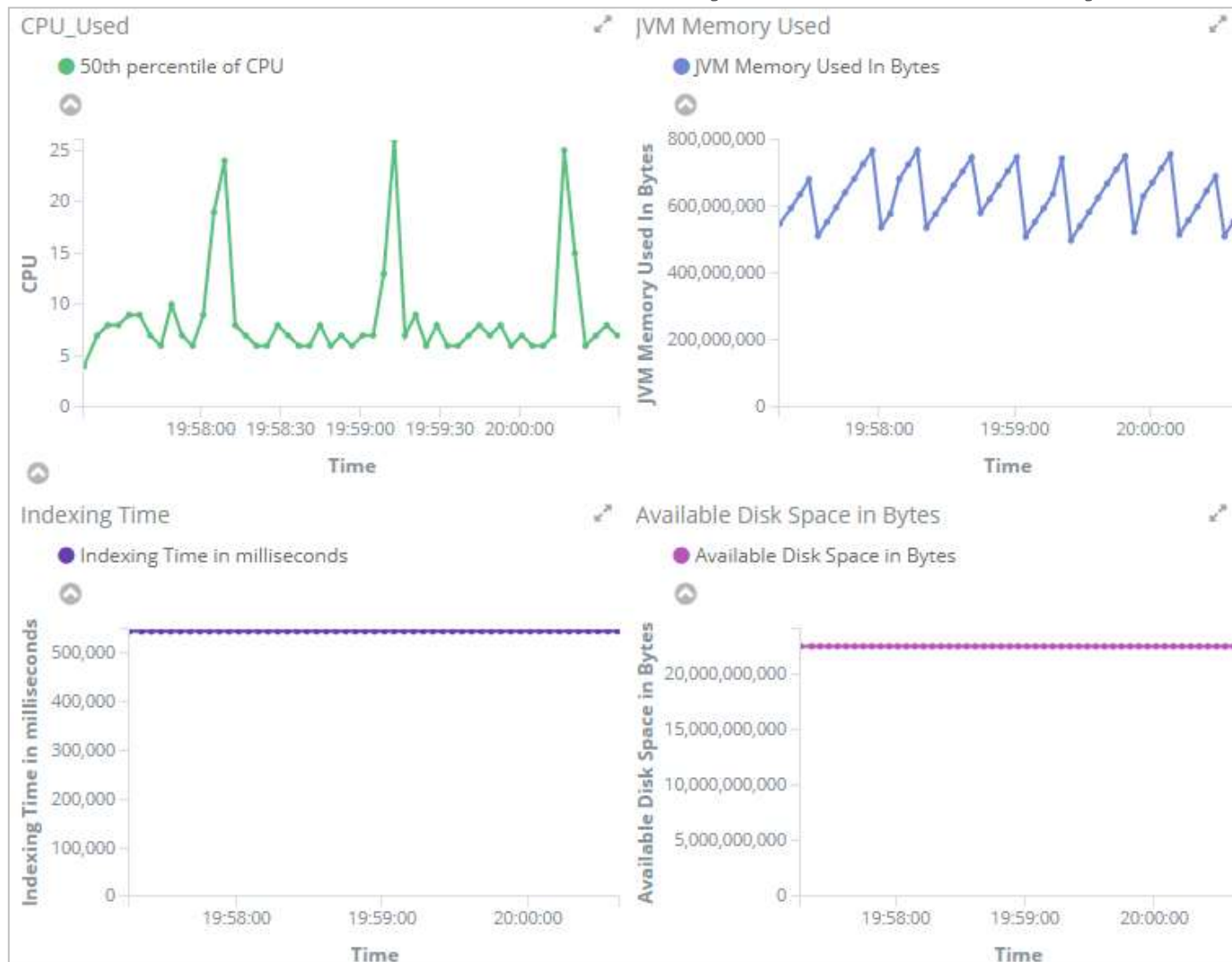
Laboratory Technologist I - Reference 60002 (Fed Monthly),Corporation Headquarters,New York,NY

500273

Administrative Assistant,Corporation Headquarters,New York,NY

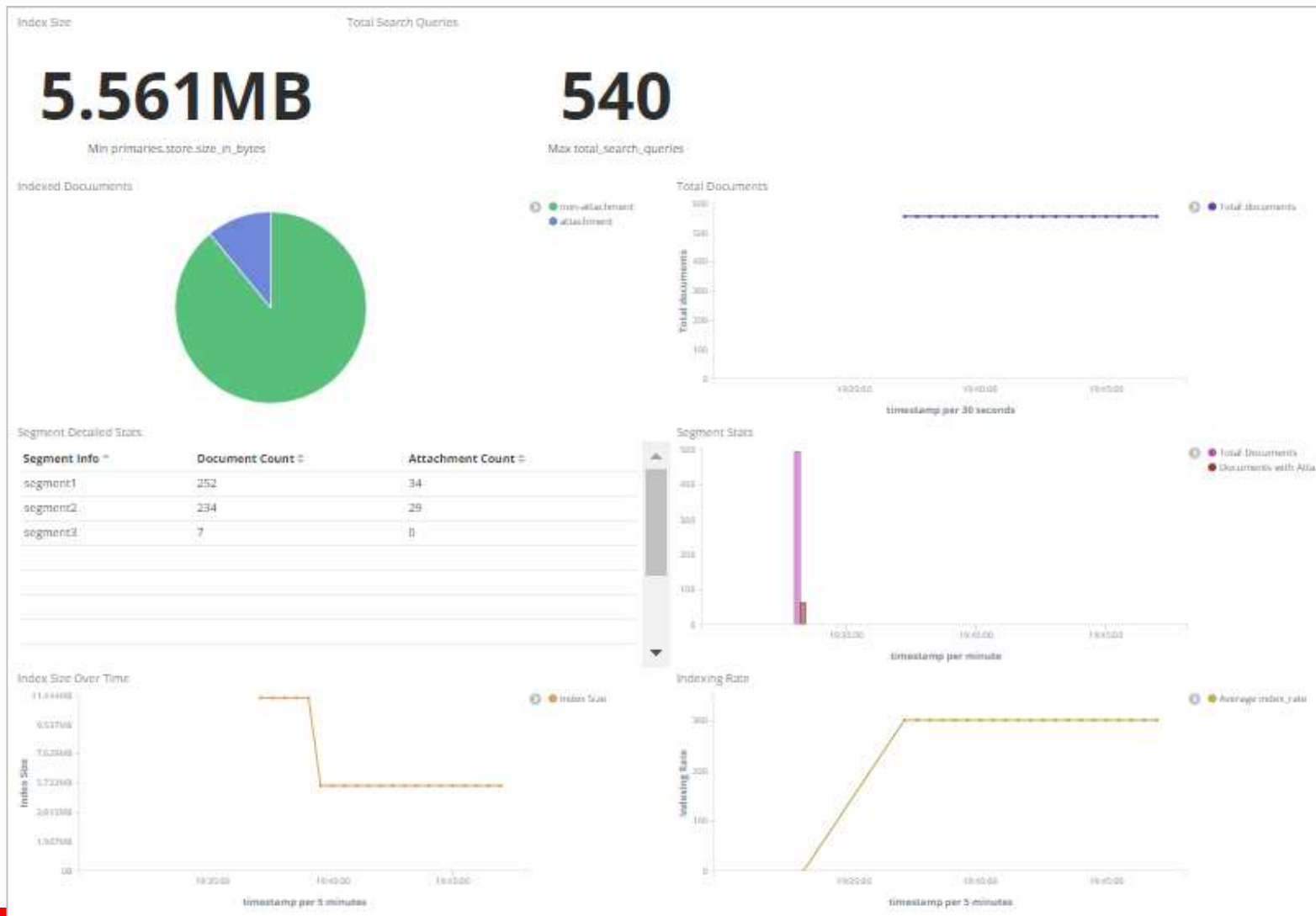
Elasticsearch System Health Monitoring

Administrators can fully Visualize System Metrics



Visualize PeopleSoft Indexing to Elasticsearch

Administrators can fully Visualize Index Metrics



Program Agenda

1 PeopleSoft Search

- Recent Highlights
- Roadmap

2 PeopleSoft Fluid

- Recent Highlights
- Roadmap

Use Case : Second Level Security Authorization

- Business requirement is to introduce additional security during updating of sensitive data
- We need to send a One Time Password to the user's registered mobile number

PeopleSoft Extensibility - Event Mapping Demo

< Employee Self Service **Manage Related Content for Content References** VP1 ps

Content References Pivot Grids MAP Layouts Event Mapping

Manage Related Content for Content References

Related Content services are assigned to the following application pages:

Search Search

Content Reference	Edit	Remove
1 Fluid Structure Content > Fluid Pages > Inventory Cost Balancing > Accounting Line Errors	Edit	Remove
2 Fluid Structure Content > Fluid Pages > Inventory Cost Balancing > Accounting Lines Not Created	Edit	Remove
3 Fluid Structure Content > Fluid Pages > Inventory Cost Balancing > Accounting Not Posted to GL	Edit	Remove
4 Fluid Structure Content > Fluid Pages > Inventory Cost Balancing > Accrued Liability Difference	Edit	Remove
5 Procurement Contracts > Add/Update Contracts	Edit	Remove
6 Purchasing > Purchase Orders > Add/Update Express POs	Edit	Remove
7 Purchasing > Purchase Orders > Add/Update POs	Edit	Remove
8 Purchasing > Receipts > Add/Update Receipts	Edit	Remove
9 Purchasing > Requisitions > Add/Update Requisitions	Edit	Remove
10 PeopleTools > Health Center > Alerts	Edit	Remove
11 Lease Administration > Hidden Components > Amend Lease	Edit	Remove
12 Customer Contracts > Determine Price and Terms > Amendment Amount Allocation	Edit	Remove
13 General Ledger > Journals > Pre-Amortization Journals > Amortization Schedule	Edit	Remove
14 Customer Contracts > Determine Price and Terms > Amount Allocation	Edit	Remove
15 Portal Objects > Pagelets > Real Time Bottom Line > Analysis 1	Edit	Remove
16 Portal Objects > Pagelets > Real Time Bottom Line >	Edit	Remove

Why Classic Plus?

- Harmonize the user experience: seamless, modern look and feel
- Enabled by Tools 8.56; Apps pages delivered on by default
 - Planned: HCM 24 (Oct 2017), FSCM 26 (Dec 2017)
 - Some Classic pages will not be converted, list to be provided
- Recommendation: Take Classic Plus with next 'Make Me Current'
 - Can be turned off at the database or component level



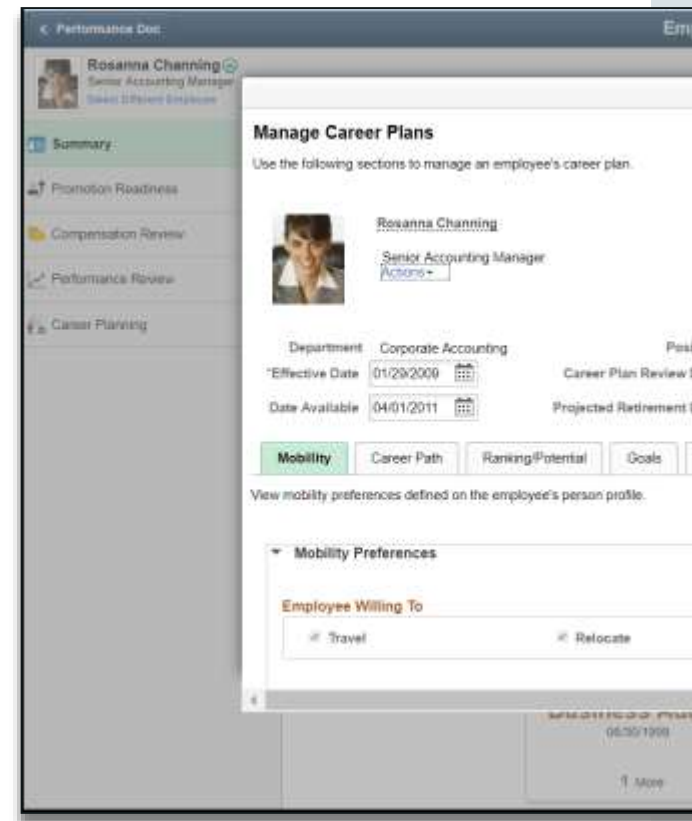
PLANNED FEATURES AND
ENHANCEMENTS



DELIVERED FLUID PAGES



FOCUS GROUPS



Classic Plus – Fluid like Theme Demo

[← Branding System Options](#)

Work Order

Work Order

Requirements

Schedules

Actuals

Cost

Miscellaneous

Work Order CB

*Description
Circuit Breaker Closing Spring is charged, but Circuit Breaker will not Close
177 characters remaining

WO Status Created As of 12/17/2012

*WO Type
Corrective Maintenance

*Priority
High

*Shop
SHOP A Shop A

Created On 12/17/2012 10:56AM

By Theresa Monroe

Required Start 12/17/2012

End 12/17/2012

WO Duration 5.00 Hours

Approval Status Approved

Service Unit

Service Request

Notes

Attachments

Supplemental Data

Asset Unit US001 US001 NEW YORK OPERATIONS

Asset ID EX_000000283 Equipment

Asset Location US001 USA - New York

Area ID

Asset Details Job Templates Work Order History

Asset Maint. History Asset Oper Info

Asset Criticality 02 Medium

▼ Work Order Tasks

Classic Plus

- Outcome of the Dual Switches

Branding System Options	Component Level Switch	PIA Rendering
Any non fluid like	Off	Classic
Any non fluid like	On	Classic
Fluid like theme for Classic	Off	Classic
Fluid like theme for Classic	On	Classic Plus

Fluid Activity Guides Demo

The screenshot displays the Oracle PeopleSoft OnBoarding for USA interface. At the top, a dark blue header bar contains an 'Exit' button, the text 'OnBoarding for USA', and a 'Next >' button. Below the header, a user profile for David Ho, Senior Financial Analyst, is shown. A left-hand navigation menu lists several sections: 'Before You Start' (marked as 'Visited'), 'Welcome' (marked as 'Not Started'), 'I-9' (marked as 'Overdue'), 'Disability' (marked as 'Not Started'), 'Veteran Status' (marked as 'Not Started'), 'Ethnic Groups' (marked as 'Not Started'), and 'Documents' (marked as 'Not Started'). The main content area features a video player titled 'Before You Start: How to Navigate Activity Guides'. The video player shows the Oracle and PeopleSoft logos and a large play button. The video title 'Before You Start: How to Navigate Activity Guides' is displayed at the bottom of the player.

Program Agenda

1 PeopleSoft Search

- Recent Highlights
- Roadmap


2 PeopleSoft Fluid

- Recent Highlights
- Roadmap

Activity Guide – User Interface Improvements

Horizontal Rendering

ExitPromote Employee

**Jill Chancellor**
Director of Finance
Headquarters

1 Work and Job Information

2 Compensation Details

3 Review and Submit

Save < Previous Next >

Step 2 of 3: Compensation Details

Pay Component	Change Percent	Change Amount	New Amount	Current Amount	Currency Code	Type	Frequency
Default NA Annual	<input type="text"/>	<input type="text"/>	4,000.53	4,000.53	USD	Flat Amount	Monthly

48,006.36 Comp-Ratio: 1.15

33,372.00
Minimum

41,715.00
Midpoint

50,058.00
Maximum

New Information

Monthly Salary 4,000.53 USD
Annual Rate 48,000.36 USD

Current Information

4,000.53 USD
48,000.36 USD

Proposed Horizontal Rendering

Activity Guide – User Interface Improvements

Modal Window for Additional Information

The screenshot displays the 'Apply for Job' application interface. The main window has a title bar with 'Exit' and 'Apply for Job'. Below the title bar, there's a progress bar showing 'Step 1 of 8'. The progress bar includes buttons for 'Save as Draft', '< Previous', and 'Next >'. The progress bar itself is divided into eight steps: 1. Start In Progress (highlighted), 2. Prequalify Not Started, 3. Attach Resume Not Started, 4. Preferences Not Started, 5. Qualification Not Started, 6. Referrals Not Started, 7. Diversity Not Started, and 8. Review & Submit Not Started.

A modal window titled 'Job Description' is open, showing details for the 'Director of Finance' position. The modal window includes a close button (X) in the top right corner. The content of the modal window is as follows:

Director of Finance

Job ID	504072	Full/Part Time	Full Time
Location	Kansas City	Reg/Temp	Regular

Preferred Qualifications

The ideal candidate will possess the following qualifications:

- Three years or more experience in a management role in a procurement or related function
- Bachelors degree; Masters preferred
- Certified Purchasing Manager or related certification a plus

Job Description

The role will consist of the following responsibilities:

- Manage and direct all purchasing activities
- Assess performance indicators to ensure schedule, costs and quality goals are met
- Define and manage the procurement system
- Organize the supplier review process to ensure compliance

At the bottom of the modal window, there is a purple button labeled 'Proposed – Modal Window'.

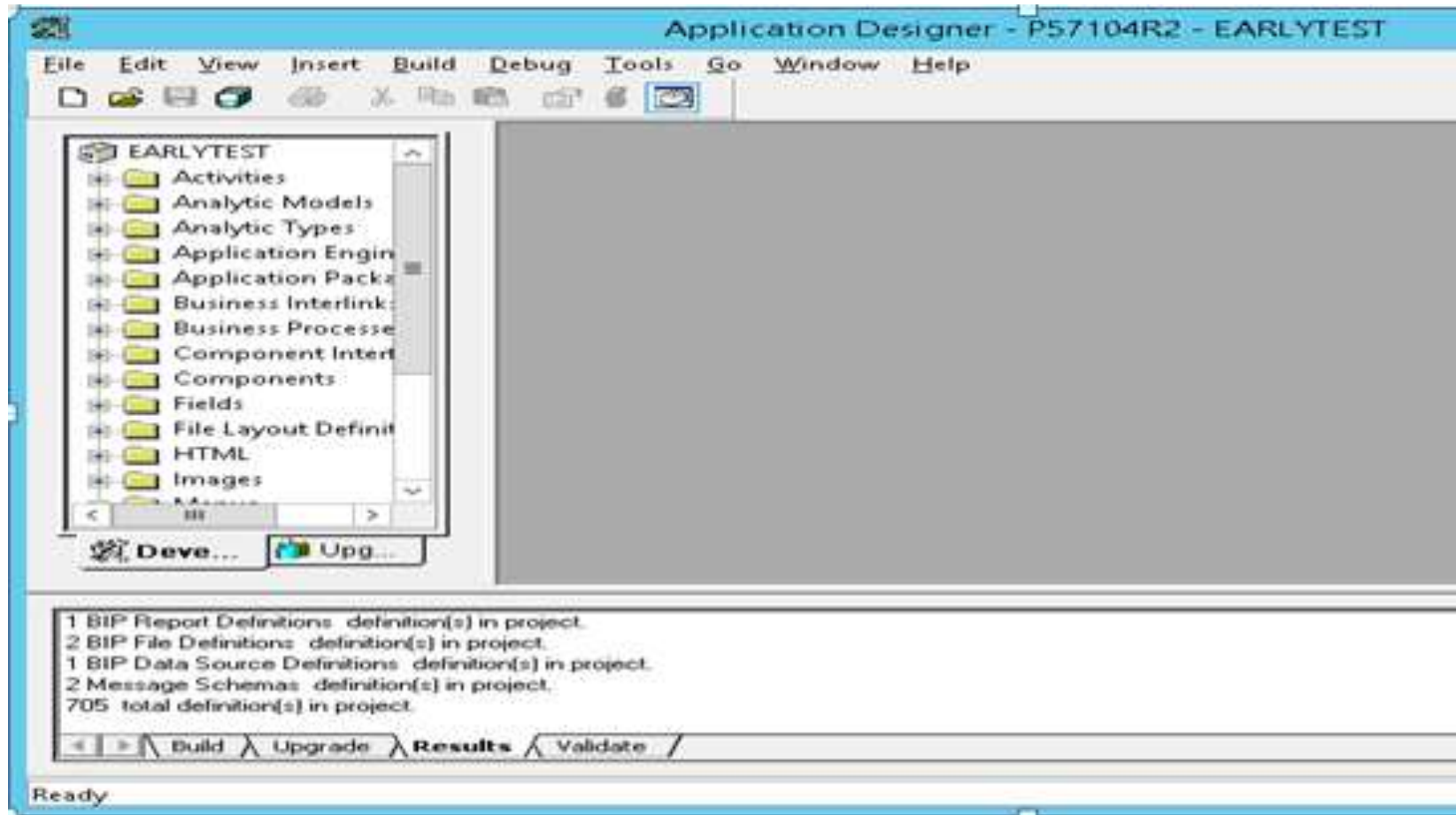
Other Roadmap items

User Productivity

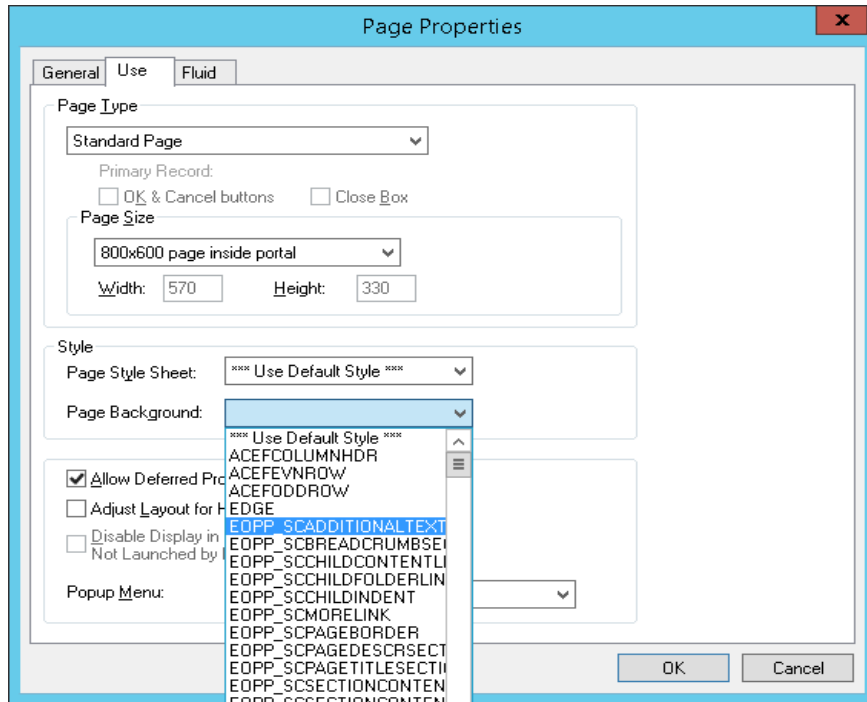
- Application Designer
 - Display database name in title bar
 - Show full value of style path

Application Designer

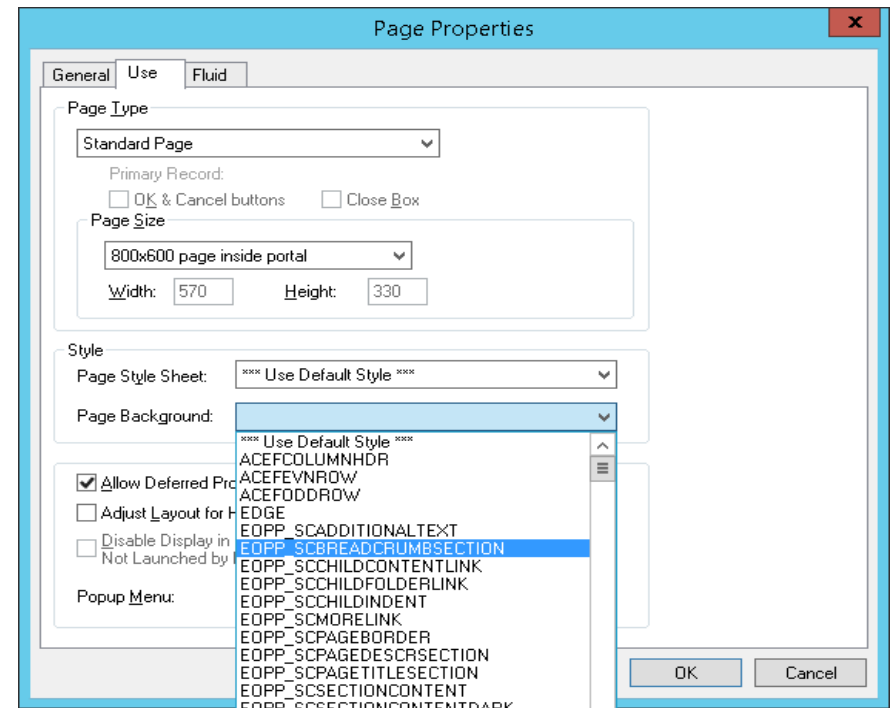
Display database name in title bar



Application Designer User Interface Improvements



Current – Style Name is partially displayed



New – Style Name fully displayed

Question and Answers

ORACLE®