



Hands on with PeopleSoft: Effective PeopleSoft Security Practices

Logesh Balasubramaniam

Agenda

01

Security Hardening

02

New Features

03

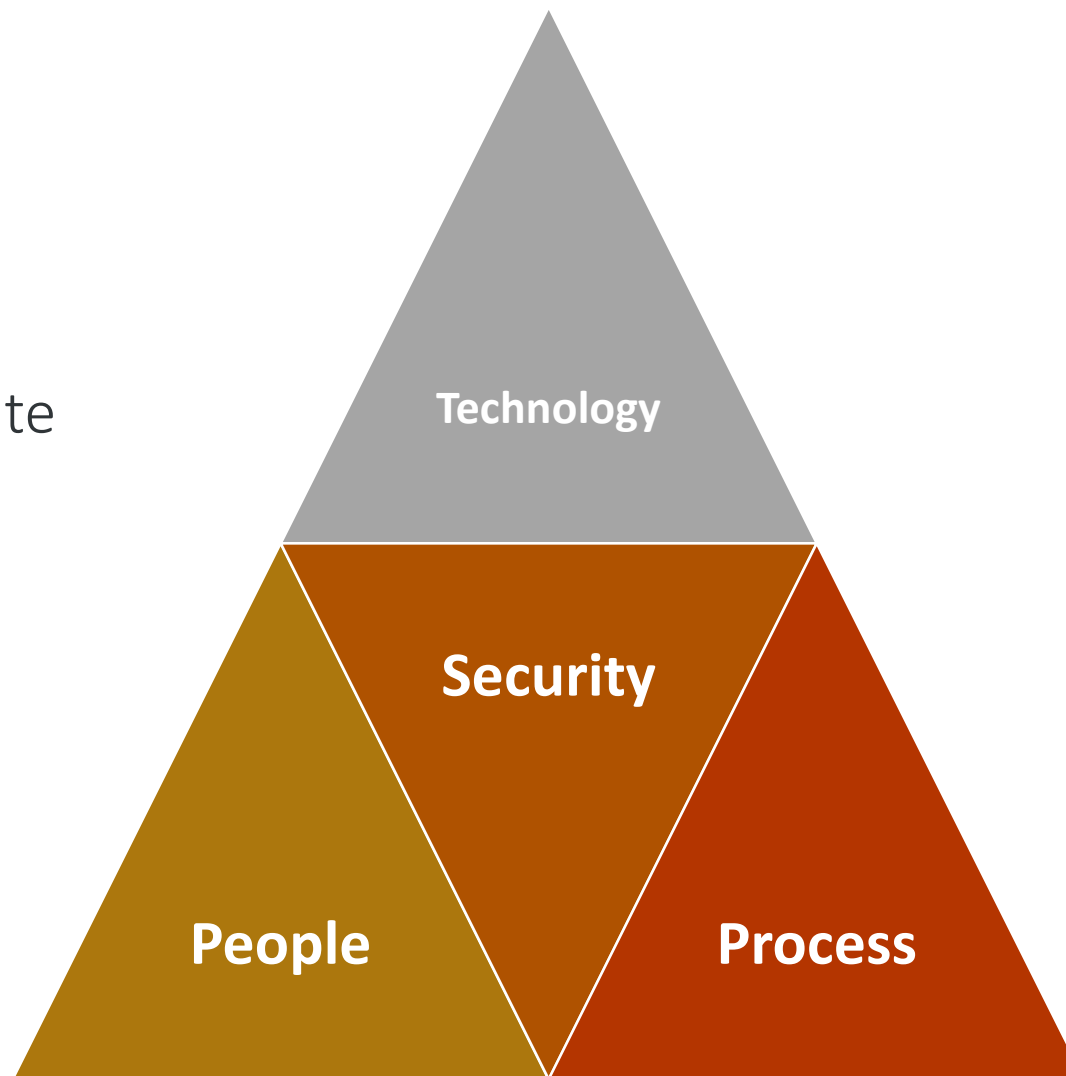
**Enterprise Security
Considerations**

04

**Cloud Security
Considerations**

Security - Essentials

Roughly **58%** of data security breaches originate from authorized access.





Security Hardening

Red Paper on Securing PeopleSoft Application

- Red paper from Oracle available on customer support
- **Doc ID 747524.1**
- **Version 3: Updated in October 2016**

ORACLE
PEOPLESOFT

Securing Your PeopleSoft Application
Environment

ORACLE RED PAPER | OCTOBER 2016



Hardening – Securing PeopleSoft Internet Architecture

- How to Security Harden the Web Server - WebLogic and WebSphere
- How to Enable SSL on a Web Server for HTTPS
- **How to Disable HTTP on a Web Server**
- How to Disable Configuration Re-Initialization - "AuditPWD"
- **How to Disable Browser Caching - note on "KIOSK"**
- How to Configure a Forward Proxy Server for the Portal and Integration Gateway
- Setting a Forward Proxy for WebLogic and WebSphere
- How to Bypass a Forward Proxy for Local Hosts
- How to Enable Mutual Authentication for Integration
- How to Enable LDAPS for Directory Integration
- **How to Enable TUXEDO Encryption (LLE and SSL)**
- **Useful hardening Lockdown links**

Hardening - Securing PeopleTools

- Delete or Disable Unused User IDs
- **Enable Password Controls**
- Expire Password At Next Logon
- Allow Password to be Emailed
- Review Sign-in and Time-out Security
- **Change the Access Password**
- **Change the Connect Password**
- Change the IB Gateway Properties Password
- **Review the Single Signon Configuration**
- **Use Strong Node Passwords or Use Certificates**
- **Review Signon PeopleCode and User Exits**

Hardening – Securing PeopleTools

- Limit Usage of the PeopleSoft Administrator Role
- Limit Access to Application Designer and Data Mover
- Limit Access to User Profiles, Roles, and Permission Lists
- Limit Ability to Start Application Server
- Limit Access to Weblogic Console
- Review Query Security
- **Enable SQL Error Message Suppression**
- **Track Users' Login and Logout Activity - PSACCESSLOG and PSPTLOGINAUDIT**
- Securing PS_HOME and PS_CFG_HOME
- Consider Auditing and Oracle Audit Vault

Hardening – Securing PeopleSoft Customisations

- Configure every Component for Row-Level Security
- Isolate all User-Entered Data to a Bind Variable
- Escape All User-Entered HTML
- **Turn Off Modifiable by HTML for Hidden Page Fields**
- User-Entered File Names Should Not Include Paths
- Understanding WS-Security
- **Protecting PDF files and XDO.CFG**



Security – New Features

PeopleSoft Security – New Features

- Web profile enhancements
- Implement SHA-2 (SHA-256) Certificate and Hash
- Extended Access and Connect ID DB Password Length
- Authentication for Cloud File Attachment
- Related Content - Event Mapping / Identity Validation Framework
- Other security related enhancements

PeopleTools 8.55 Security Features

Authorizing Resource Access Using Cross-Origin Resource Sharing (CORS)

- The Same-Origin Policy restricts the browser from performing certain actions by scripts or documents based on the origin.
- While it is a vital piece of web security, it also poses problems. What happens when you want to allow a site with a different origin to access your content?
- The CORS standard gives web servers cross-domain access controls, which enable secure cross-domain data transfers.
- Use the Authorized Site page to maintain sites that are authorized to request resources from this web server using the Cross-Origin Resource Sharing (CORS) standard.

HOW TO RESTRICT SITES WHICH CAN FRAME PEOPLESOFT APPLICATION CONTENT

- Setting to allow external sites to frame PeopleSoft pages
- Uses the X-FRAME-OPTIONS custom property on the Web Profile to specify which action should be taken by the browser.
- Based on the custom property setting, an HTTP response header of the same name will be included to instruct the browser on how framing should be controlled.

PeopleTools 8.55 Security Features

- SHA-256 hash with salt algorithm
- 4096 key size
 - When generating private keys for application server-based digital certificates, by default PeopleTools uses the SHA-256 with RSA encryption algorithm and the 4096 key size.
 - When using PSKeyManager to generate private keys for web server-based digital certificates, the default signing algorithm is SHA-256 with RSA encryption.
 - PS_TOKEN will continue to use SHA-1 digest. Customers will be recommended to use SHA-2 as Certificate Node Authentication
 - **New/modified PeopleCode functions**
HashSHA256() - Hash without salt
HashWithSalt() - Hash with salt

PeopleTools 8.55 Security Features

The maximum length for the database access ID password and for the connect ID password has been extended to 32 characters.

- Issue with 3DES and encrypting a string of 8 or fewer characters
- Intermediate solution – use Initialization Vector
- Actual solution – extend space to 32 characters
- Password in PSOPRDEFN will be SHA-2 hashed with salt
- The PSACCESSPRFL table has been replaced by the PSACCESSPROFILE table to accommodate the longer passwords.
- Enhanced login audits – PS_PT_LOGIN_AUDIT, PS_ACCESSLOG

PeopleTools 8.55 Security Features

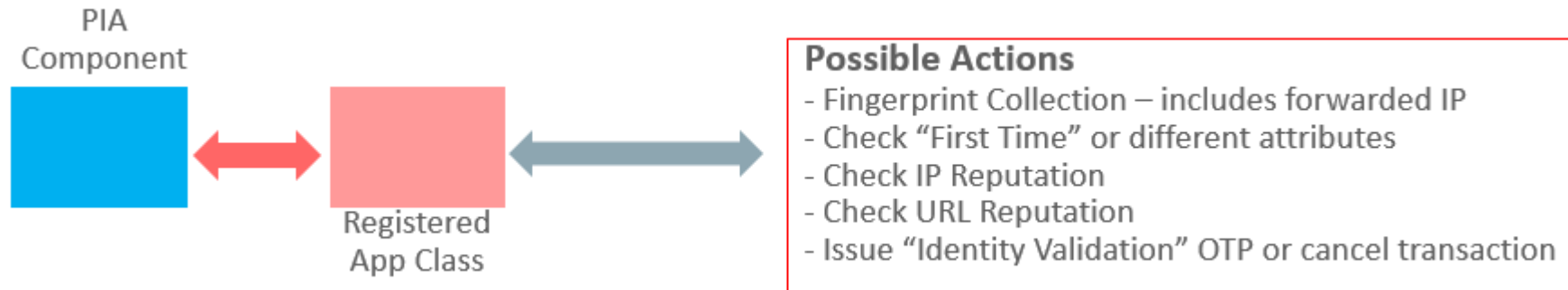
App/Web Server Encryption

- Link Level Encryption (LLE) is the default encryption for Java server listener (JSL) connections to the WebLogic Java container to the Tuxedo application server.
- LLE is being deprecated.
- While LLE is still supported, you should upgrade to SSL.

To implement SSL, see “Configuring SSL for JSL/WSL connections for Tuxedo in PeopleSoft” attached to Doc ID 1242154.1 on the Oracle support web site.

PeopleTools 8.55 Security Features

PeopleSoft Related Content Framework can also be used to map application class PeopleCode to component and component record events. This allows custom PeopleCode programs to be defined for a component without customizing the component definition.



Sample Resources:

- **Nexmo Verify (OTP)**
<https://www.nexmo.com/products/verify/>
- **BrightCloud® IP Reputation Service**
<https://webroot-cms-cdn.s3.amazonaws.com/1114/5462/0565/BCSS-IPRS-DS.pdf>
- **IP Location**
<https://www.iplocation.net/>

PeopleTools 8.55 Security Features

There is a new Tab called “Event Mapping” under "Manage Related Content Services" page where developers can associate components and Event Mapping application classes.



Developer chooses the Content Reference (CREF) from Select content reference page



PeopleTools 8.55 Security Features

Developer chooses the event from Event name dropdown and processing order

Assign Related Content
Assign Related content services to component Record level Event Mapping.

Portal Name: EMPLOYEE
Content Reference: [Change My Password](#)

Component Record Level Event Mapping
Assign Related content services to component Record level Event Mapping

Enable	*Record	Event Name	Select	Service ID	Processing Order
<input checked="" type="checkbox"/>	<input type="text"/>	<div>Row Delete Row Init Row Insert Row Select Save Edit Save PostChange Save Prechange</div>	<input type="text"/>		<div>PostBuild PreBuild SavePreChange SavePostChange Workflow</div>

[Return to Manage Related Content](#)

Assign Related Content
Assign Related Content services to component record level event mapping

EMPLOYEE
[Change My Password](#)

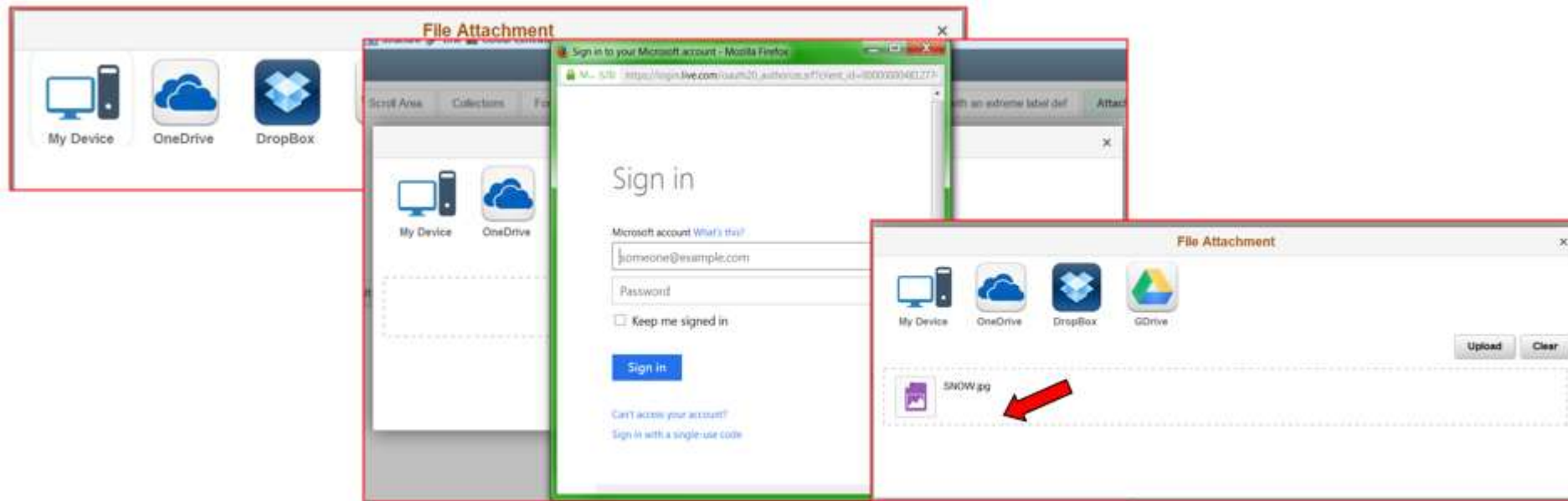
Component record level event mapping

Select	Service ID	Processing Order	Configure
<input type="text"/>	ALERTS	<div>PostProcess PreProcess</div>	<input type="button" value="Configure"/>

Authentication for Cloud File Attachment

PeopleSoft will allow upload files, for instance, their resume, directly from the cloud based storage services such as OneDrive, DropBox and others.

PeopleSoft will use the authentication, OAuth, used by the Cloud Storage provider so that the user can initiate the file transfer.



PeopleSoft Health Center

PeopleSoft Health Center

PeopleTools 8.54

- JMX Foundation
 - Agents
 - Instrumentation
 - Notification

PeopleTools 8.55

- Dashboards
- Real Time Monitoring
- Alerts
- Simple Log File Integration



PeopleSoft Human Capital Management (HCM)
PeopleSoft Financial Management (FMS)
PeopleSoft Campus Solutions (CS)

Search Server
PeopleSoft Enterprise PeopleTools
Oracle WebLogic Server + Oracle Tuxedo

PeopleSoft Database



See: <https://www.youtube.com/watch?v=9AjCXXVLios>



PeopleTools 8.55 Features

■ **Security Deployment Tool**

- New method of delivering security related updates to your target environment for menus, roles, and permission lists through PeopleSoft Update Manager.
- Previously, updates to existing menus, roles, and permission lists were delivered via manual instruction documents that resulted in manual steps in your change package.
- Review each of the delivered changes online by bug number and/or by object name. Determine whether you want to accept the change to be processed and applied to your target environment.

■ **Automated Configuration Manager**

- Manage security and integration end-points during environment replication and refresh activities

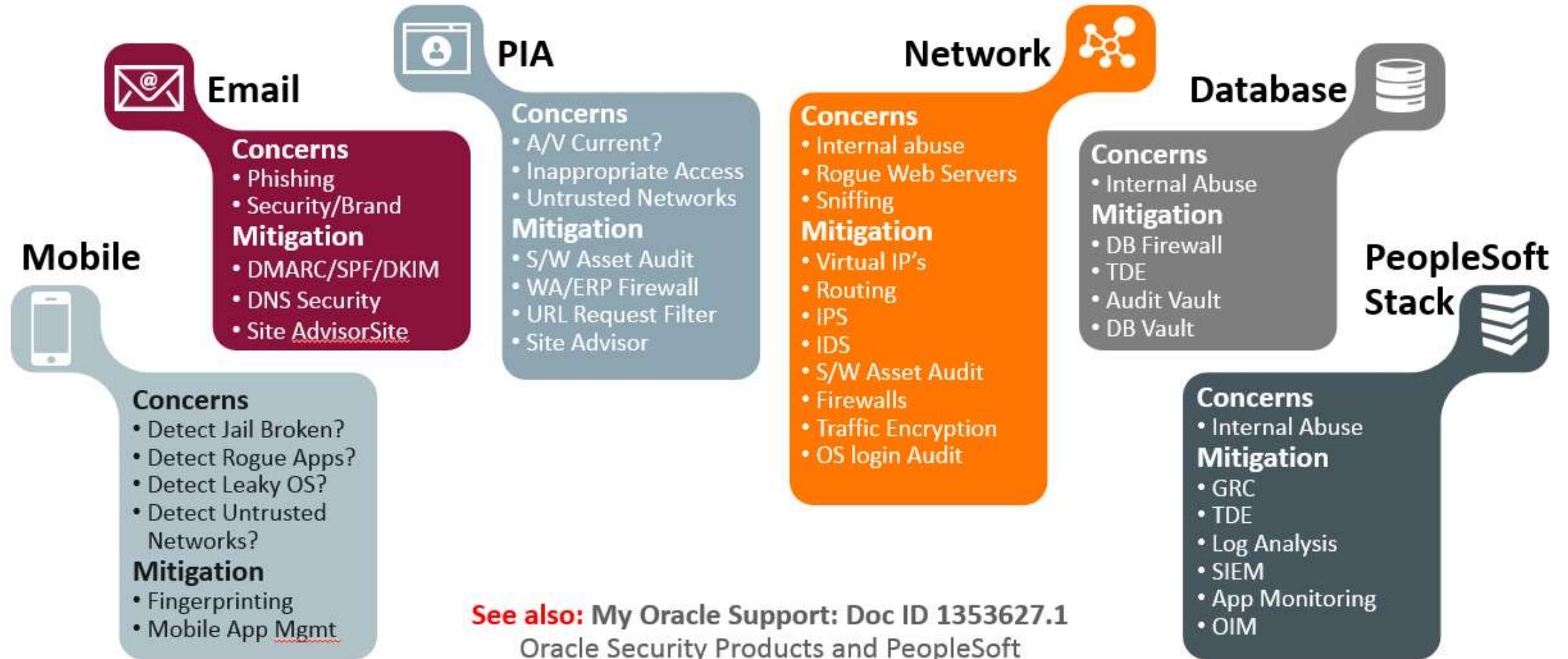
PeopleTools 8.55 Features

- Input Only Field
- Robust Forgotten Password
- Updated OpenSSL Libraries
- Log Correlation



Enterprise Security - Considerations

Elements of Threat Architecture and Enterprise Protection



Enterprise Security - Considerations

- Each new technology opens new Attack Vectors
- Compliance Does Not Equal Security
- IT Security Is Not Just For The IT Department
- Real Consequences for Loss of Security
- Balancing the Need for Security With the Need for Productivity

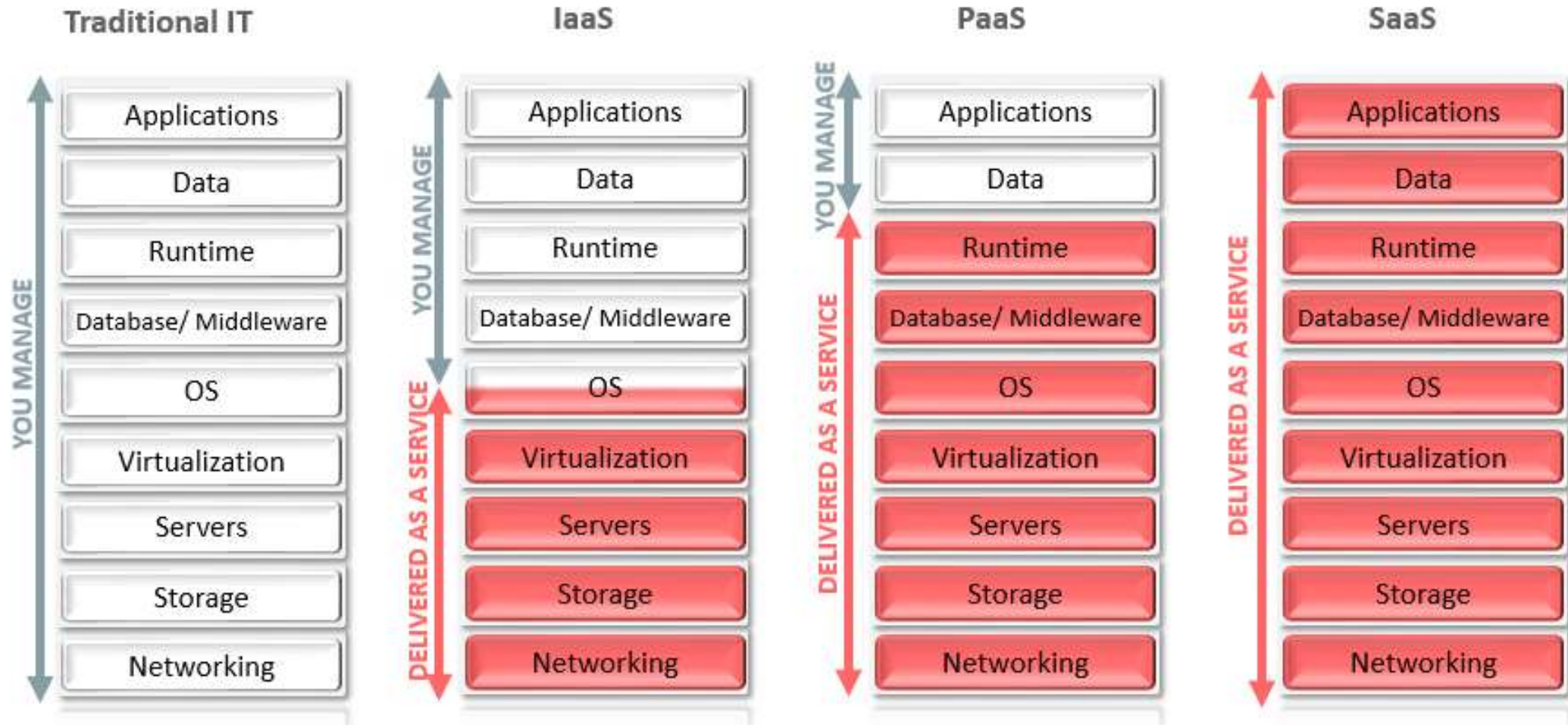
Prevent PeopleSoft Becoming Collateral Damage

- Invest in Collaboration
 - Enterprise Security Virtual Teams
- Enterprise Wide, Tested and Updated, Security Processes
- System Health Dashboard
- **Weighted, Organization Specific, CPU Advisory Analysis**
- Phishing Awareness and Protection



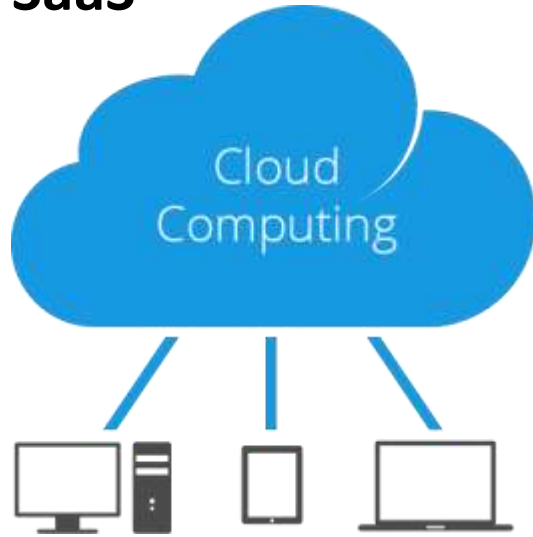
Cloud Security - Considerations

Operational Differences in Cloud Models

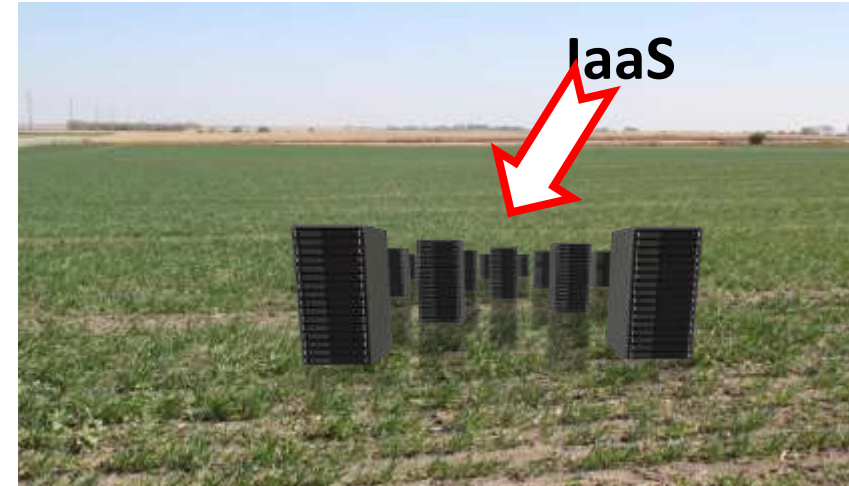


Cloud Security - Considerations

SaaS



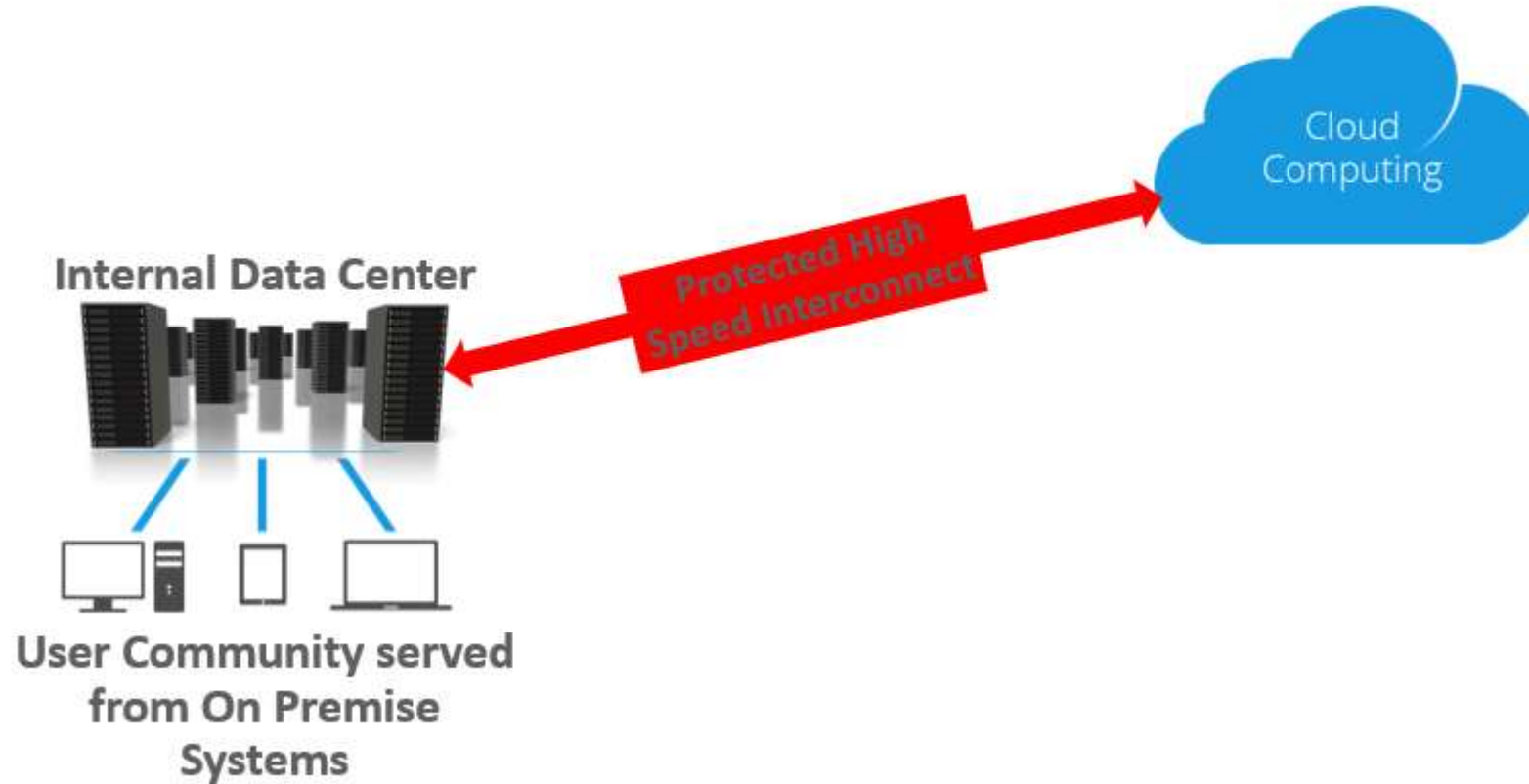
- Delivered Security Bundle
- Additional Fee Based Services
- Visibility and Transparency?
- Brand Protection



- Bring Your Own License - BYOL
- Bring Your Own In House Expertise
- Bring Your Own Management Processes
- Bring Your Own Audit and Monitoring
- Bring Your Own Policy Management
- Bring Your own Disaster Recovery
- Bring Your own Brand Protection

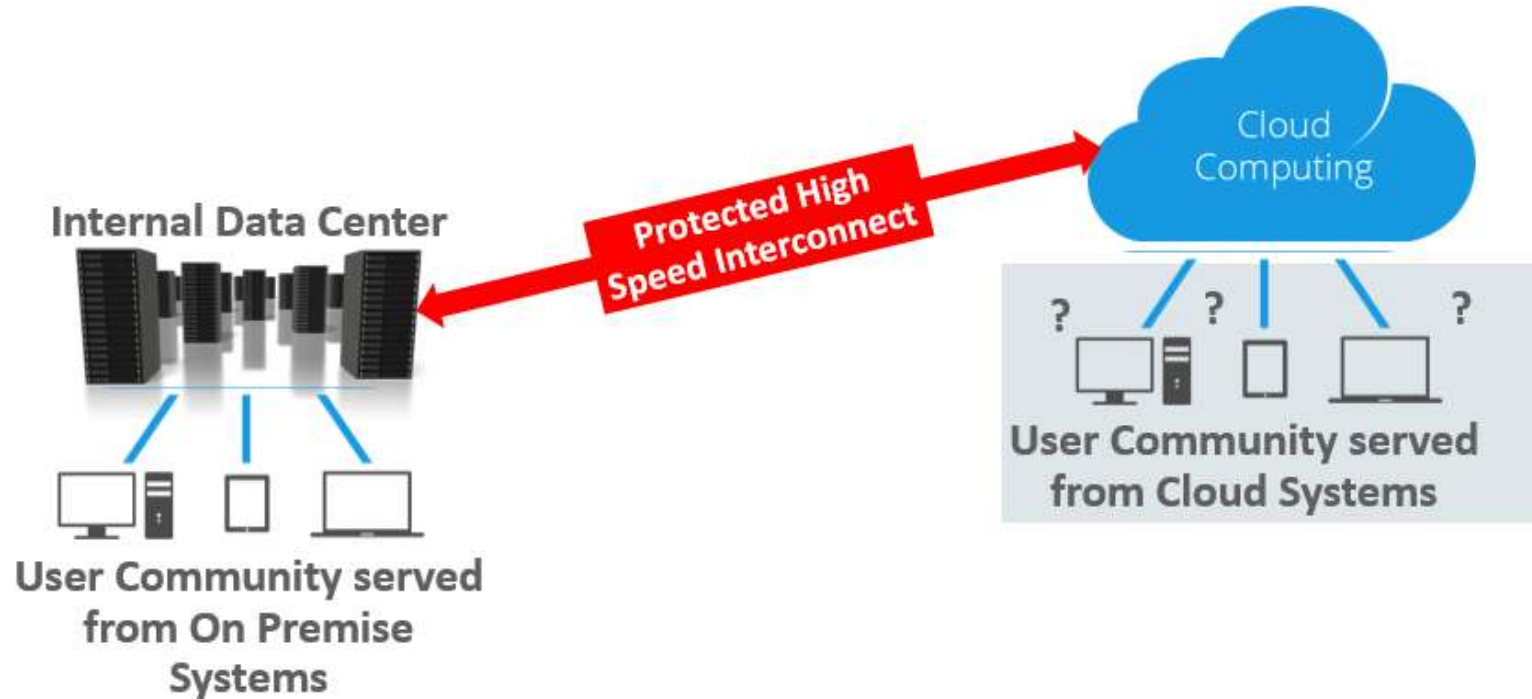
Cloud Security - Considerations

The cloud (I/PaaS) can be simply an extension of your existing data center ...



Cloud Security - Considerations

... or the basis of delivering services separately to end users.



If you are considering delivering user services directly from the cloud and you do not have your on-premise system security in place, you are unlikely to be successfully secure in the cloud.



Q/A Time

How do you treat your passwords?

Partner



Toothbrush



Underwear



- ✓ **Choose a good one**
- ✓ **Don't share with anyone**
- ✓ **Change it occasionally**

Q&A



Logesh Balasubramaniam

Presence of IT | Excellence in People

Logesh.balasubramaniam@presenceofit.com

m. +64 021 251 9921 | t. 1300 665 503

blog: <https://leanitdesigns.wordpress.com>